



# **Optimist Class**

**Summer Series**

**Pre-Christmas Series**

**Post-Christmas Series**

**SAILING INSTRUCTIONS**

**2011 - 2012**

## Revision Record

| <b>Revision Record</b> | <b>Revision Date</b> | <b>Clause Affected/Notes</b> |
|------------------------|----------------------|------------------------------|
| 0                      | 25 Sep 2011          | Issued for Use               |
|                        |                      |                              |
|                        |                      |                              |
|                        |                      |                              |
|                        |                      |                              |
|                        |                      |                              |

# Contents

|                                                                | Page |
|----------------------------------------------------------------|------|
| 1 RULES                                                        | 4    |
| 2 NOTICES TO COMPETITORS                                       | 4    |
| 3 SAILING INSTRUCTIONS CHANGES                                 | 4    |
| 4 SIGNALS MADE ASHORE                                          | 4    |
| 5 SCHEDULE OF RACES                                            | 4    |
| 6 CLASS FLAGS                                                  | 4    |
| 7 COURSES                                                      | 5    |
| 8 MARKS                                                        | 5    |
| 9 THE START                                                    | 5    |
| 10 THE FINISH                                                  | 5    |
| 11 TIME LIMIT                                                  | 5    |
| 12 SCORING                                                     | 6    |
| 13 SAFETY REGULATIONS                                          | 6    |
| 14 EQUIPMENT AND MEASUREMENT CHECKS                            | 6    |
| 15 OFFICIAL BOATS                                              | 6    |
| 16 TRASH DISPOSAL                                              | 6    |
| 17 PRIZES                                                      | 7    |
| 18 DISCLAIMER OF LIABILITY                                     | 7    |
| 19 INSURANCE                                                   | 7    |
| ATTACHMENT "A" TRIANGLE/ WINDWARD/ LEEWARD COURSE DIAGRAM..... | 8    |
| ATTACHMENT "B" WINDWARD/ LEEWARD COURSE DIAGRAM .....          | 9    |
| INTRODUCTORY RULES FOR RACING.....                             | 10   |

## 1 RULES

The series will be governed by the 'Introductory Rules of Racing' Version 1.01 dated February 2008 (see page 10), the Yachting Australia (YA) Special Regulations Part 2 for Off the Beach Boats, the Optimist Class Rules, the Notice of Race, all as amended by these Sailing Instructions.

***Competitor's Attention is drawn to the ISAF Fundamental Rule 4: Decision to Race  
"The responsibility for a boat's decision to participate or continue racing is hers alone"***

## 2 NOTICES TO COMPETITORS

Notices to Competitors will be posted on the official Off the Beach (OTB) notice board located on the North wall of the OTB Clubhouse.

## 3 SAILING INSTRUCTIONS CHANGES

Any change to the Sailing Instructions will be posted before 0800hrs on the day it will take effect, except that any change to the schedule of races will be posted no later than 2000hrs on the Tuesday before it will take effect.


## 4 SIGNALS MADE ASHORE

- 4.1 Signals will be displayed from the flagpole on the North-East corner of the OTB Clubhouse balcony.
- 4.2 When Flag AP is displayed, '1 minute' is replaced with 'not less than 45 minutes'. This changes Race Signal AP.
- 4.3 When Flag D is displayed boats shall not leave the shore. The Warning Signal shall be made not less than 45 minutes after Flag D is removed.

## 5 SCHEDULE OF RACES

- 5.1 Days of Racing are listed in the Club's Event Calendar 2011 - 2012. The Race Officer will determine the number of races sailed on each day.
- 5.2 Flag L displayed on the committee vessel at the finish line indicates that another race will be started following completion of the current race. This will be removed one minute before the new warning signal.
- 5.3 The scheduled time of the first warning signal is 0957hrs.

## 6 CLASS FLAGS

| Class/Division | Class Flag                  |                                                                                      |
|----------------|-----------------------------|--------------------------------------------------------------------------------------|
| Optimist Class | Flag with Optimist Insignia |  |

## 7 COURSES

7.1 Attachments A and B, describe the courses. Separate instructions will be issued for special courses.

7.2 The course type shall be signified by:

| Course Flag | Course                      |
|-------------|-----------------------------|
| Flag O      | Triangle/ Windward/ Leeward |
| Flag W      | Windward/Leeward Course     |
| Flag U      | Special Course              |

7.3 All Marks to Port.

7.4 The course shall NOT be changed after the start.

## 8 MARKS

8.1 Marks 1, 2, and 3 will be buoys determined by the Race Officer to suit the day.

## 9 THE START

9.1 Races shall be started as follows:

| Signal      | Flag and Sound                          | Minutes before Start |
|-------------|-----------------------------------------|----------------------|
| Warning     | Class Flag & one sound                  | 3                    |
| Preparatory | P or Black & one sound                  | 2                    |
| One Minute  | Preparatory removed<br>& one long sound | 1                    |
| Start       | Class Flag removed<br>& one sound       | 0                    |

This changes rule 26.

9.2 The starting line will be between the mast displaying an orange flag on the race committee vessel at the starboard end and the port-end starting mark. A safety mark displaying a yellow flag may be laid near the race committee vessel. If laid, boats approaching the starting line to start shall leave it on the same hand as the race committee vessel.

9.3 A boat starting later than 10 minutes after her starting signal will be scored Did Not Start (DNS) without a hearing. This changes rule A4.

## 10 THE FINISH

The finishing line will be between the mast displaying an orange flag on the race committee vessel and the finishing mark.

## 11 TIME LIMIT

The time limit for the first boat to sail the course and finish is thirty minutes. If not, the race will be abandoned. Boats finishing more than ten minutes after the first boat will be scored points for Did Not Finish without a hearing

This changes rules 35, A4 and A5.

## **12 SCORING**

- 12.1 Boats that join the series after the first completed race will be awarded a "Late Entrant" score, back-filled to the first race. The "Late Entrant" score will be the Did Not Compete (DNC) score for the first race in which the boat competes.  
Previously allocated scores for other boats will not be altered. This changes rule A9.
- 12.2 Boats entering individual races (not the complete series) will only be eligible for individual race-day prizes, not the season's series points. This changes rule A4.
- 12.3 Discards:  
Rule A2 is changed as follows:-  
Less than 12 races completed – a boat's series score will be the total of her race scores.  
12 or more races completed – a boat's series score will be the total of her race scores excluding her worst 22% scores.
- 12.4 Number of boats to start.  
Less than three starters: No Race.  
Less than five starters: No second & third place prize.  
Less than seven starters: No third place prize.
- 12.5 Change of Boat during season.  
When a class boat is replaced, the aggregate points scored will carry forward to the replacement boat. The replacement boat shall be allocated a provisional handicap until such time as a new handicap is established.
- 12.6 Handicap System.  
a. Performance handicaps shall apply.  
b. the handicap results from the first three racing-days will be used to determine the starting handicap for each boat. This number will then be applied retrospectively according to handicap rules commencing from Race 1. This changes rule A4  
c. the handicaps for a re-scheduled race shall be those current at the date of resail.
- 12.7 Change of helmsperson is not permitted
- 12.8 Results.  
a. Provisional results may be displayed on the Official Notice Board or Club's Web Site.  
b. Scoring enquiries shall be submitted at the General Office on the form available from the box beside the Check-out /Check-in registration desk in the Cadet storage area by midday of the next working day following the race.

## **13 SAFETY REGULATIONS**

- 13.1 All competitors must wear approved category 1 or 2 Personal Flotation Devices whilst on the water.
- 13.2 Check-out / Check-in sheets will be located on the registration desk in the Cadet storage area. The skipper of each boat shall "Check Out" on this sheet prior to leaving the shore, and "Check in" at the completion of racing, immediately upon returning to shore.
- 13.3 Boats retiring from a race are requested to notify either a rescue boat operator, the Race Office or the R.G. Base Radio Operator as soon as possible.

## **14 EQUIPMENT AND MEASUREMENT CHECKS**

Boats or equipment may be inspected at any time.

## **15 OFFICIAL BOATS**

Official boats will display the RGYC burgee.

## **16 TRASH DISPOSAL**

Boats shall not put trash in the water. Trash may be placed aboard support and race committee boats.

**17 PRIZES**

Trophies will be as listed in the Event Calendar 2011-2012.

**18 DISCLAIMER OF LIABILITY**

Competitors participate in the series entirely at their own risk. See rule 4, "Decision to Race". The organizing authority will not accept any liability for material damage or personal injury or death sustained in conjunction with or prior to, during, or after the series.

**19 INSURANCE**

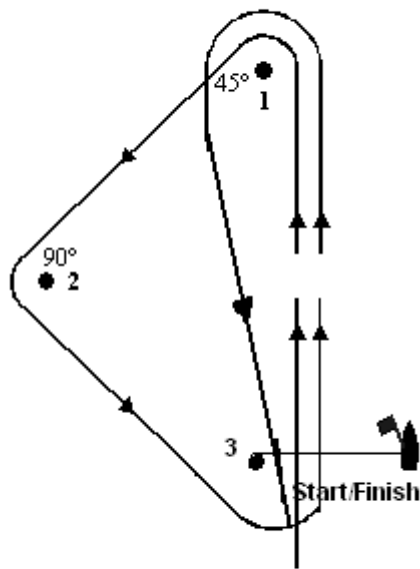
Each participating boat shall be insured with valid third-party liability insurance with a minimum cover of \$10,000,000 per event or the equivalent.

# Attachment 'A'

## Triangle/ Windward/Leeward

Course to be sailed:  
Start - 1 - 2 - 3 - 1 - Finish

Flag 'O'

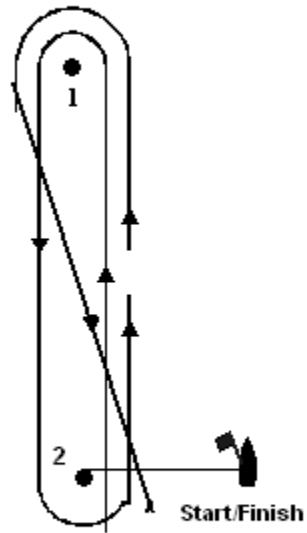


**Attachment 'B'**

**Windward/Leeward**

Course to be sailed:- Start - 1 – 2 – 1 - Finish

Flag W





# Introductory Rules for Racing

Version 1.01 - February 2008

## Some Explanations

**Windward and Leeward:** The *leeward* side of your boat is the side where your mainsail lies. The *windward* side is the other side.

**Port and Starboard tack:** You are on *port* or *starboard* tack according to your *windward* side.

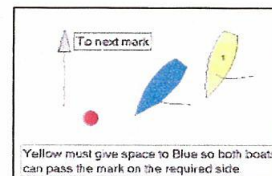
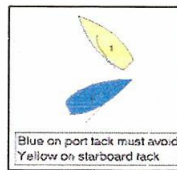
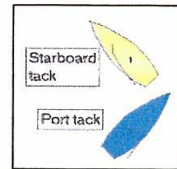
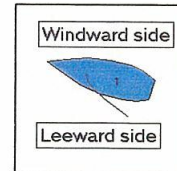
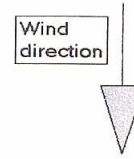
**Advisor:** A person appointed by the race organizers to assist competitors in understanding the rules and, when appropriate, to penalize a boat.

## Basic Rules

1. You must comply with the principles of good sportsmanship.
2. You must try not to collide with another boat.

## Rules When Boats Meet

3. When you and the other boat are on opposite *tacks*, if you are on *port* tack you must avoid the boat on *starboard* tack.
4. When you and the other boat are on the same *tack*, you must avoid the other boat
  - (a) if she is in front of you, or
  - (b) if she is on your *leeward* side.
5. After starting, when you and the other boat approach a mark or an object that both boats need to avoid, and the other boat is between you and the mark or other object, you must give her sufficient space to pass it safely on the same side. However, when the boats are on opposite tacks at a windward mark, this rule does not apply.
6. When the other boat is required to avoid you, if you change course, you must give the other boat an adequate opportunity to avoid you.



## Other Rules

7. At the starting signal you must be behind the starting line.
8. After the starting signal, you must sail the course described by the race organizers.
9. You must not touch a mark of the course.
10. If you think you or another boat has broken a rule or if you are unclear about the rules at any time during the race, you must describe the incident to the *advisor* after the race. The *advisor* may then add two points to the score of any boat that has broken a rule. If the offence is serious, the *advisor* may add extra points to the boat's score.