

Royal Geelong Yacht Club.

**BRAVO COURSE**

2011-2012 Summer Season

**SAILING INSTRUCTIONS**

Revision Record

| Revision Record | Revision Date | Clause Affected/Notes |
|-----------------|---------------|-----------------------|
| 0               | 23 Sept 2011  | Issued for Use        |
| 1               | 6 Oct 2011    | Added centre Gate     |
|                 |               |                       |
|                 |               |                       |
|                 |               |                       |
|                 |               |                       |

# Contents

|    |   |    |
|----|---|----|
| 1  | RULES.....  | 4  |
| 2  | NOTICES TO COMPETITORS.....                                     | 4  |
| 3  | SAILING INSTRUCTIONS CHANGES.....                               | 4  |
| 4  | SIGNALS MADE ASHORE.....  | 4  |
| 5  | SCHEDULE OF RACES.....  | 4  |
| 6  | CLASS FLAGS.....  | 4  |
| 7  | COURSES.....  | 5  |
| 8  | MARKS.....  | 5  |
| 9  | THE START.....  | 5  |
| 10 | CHANGE OF THE NEXT LEG OF THE COURSE.....                       | 6  |
| 11 | THE FINISH.....   | 6  |
| 12 | TIME LIMIT.....   | 6  |
| 13 | PROTESTS AND REQUESTS FOR REDRESS.....                          | 6  |
| 14 | SCORING.....  | 6  |
| 15 | SAFETY REGULATIONS.....   | 8  |
| 16 | EQUIPMENT AND MEASUREMENT CHECK.....                            | 8  |
| 17 | OFFICIAL BOATS.....   | 8  |
| 18 | RADIO COMMUNICATION.....  | 8  |
| 19 | PRIZES.....   | 8  |
| 20 | DISCLAIMER OF LIABILITY.....                                    | 8  |
| 21 | INSURANCE.....  | 8  |
|    | ATTACHMENT 'A' WINDWARD/LEEWARD/TRIANGLE – UPWIND FINISH.....   | 10 |
|    | ATTACHMENT 'B' WINDWARD/LEEWARD/TRIANGLE – DOWNWIND FINISH..... | 11 |
|    | ATTACHMENT 'C' WINDWARD/LEEWARD - DOWNWIND FINISH.....          | 12 |
|    | ATTACHMENT 'D' WINDWARD/LEEWARD – UPWIND FINISH.....            | 13 |
|    | ATTACHMENT 'E' WINDWARD/LEEWARD – CENTRE GATE.....              | 13 |

**1 RULES.**

The series will be governed by the rules as defined in the Racing Rules of Sailing (RRS), and the Special Regulations of Yachting Australia (YA), Part 2 for Off The Beach boats (OTB).

***Competitor’s Attention is drawn to the ISAF Fundamental Rule 4: Decision to Race  
 ”The responsibility for a boat’s decision to participate or continue racing is hers alone”***

**2 NOTICES TO COMPETITORS.**

Notices to Competitors will be posted on the official OTB notice board located on the North wall of the OTB Clubhouse West of the walkway.

**3 SAILING INSTRUCTIONS CHANGES.**

Any change to the Sailing Instructions will be posted before 10:00 on the day it will take effect, except that any change to the schedule of races will be posted by 20:00 on the day before it will take effect

**4 SIGNALS MADE ASHORE.**



- 4.1 Signals will be displayed from the flagpole on the North-East corner of the OTB Clubhouse balcony.
- 4.2 When Flag AP is displayed, ‘1 minute’ is replaced with ‘not less than 45 minutes’.  
This changes Race Signal AP.
- 4.3 In uncertain weather, Flag H may be displayed, pending a decision of the Race Committee. On this flag being removed, appropriate signals under rule 27.3 will be displayed if the race is to be postponed or abandoned.
- 4.4 When Flag D is displayed boats shall not leave the shore. The Warning Signal will be made not less than 45 minutes after Flag D is removed.

**5 SCHEDULE OF RACES.**

- 5.1 Races are scheduled as listed in the Club’s Event Calendar 2011 - 2012.
- 5.2 Classes will be started in the following order, with the first warning signal as per the Club’s Event Calendar 2011 – 2012.
- 5.3 Flag L displayed on the committee vessel at the finish line indicates that another race will be started following completion of the current race. This will be removed one minute before the new warning signal.

| Start No | Time (warning signal)     |
|----------|---------------------------|
| 1        | Miscellaneous Class       |
| 2        | International Cadet Class |

**6 CLASS FLAGS.**

| Class/Division            | Class Flag |   |
|---------------------------|------------|---|
| Miscellaneous Class       | Flag G     |  |
| International Cadet Class | Flag A     |  |

**7 COURSES.**

7.1 Attachments A, B, C and D describe the courses. Separate instructions will be issued for special courses.

7.2 The course type shall be signified by: -

| Course Flag   | Course   |
|---------------|--|
| Flag O        | Windward/Leeward/Triangle Course                                     |
| Flag W        | Windward/Leeward Course  |
| Flag W over G | Windward/Leeward Course with a Centre Gate                           |
| Flag T        | Trapezoid Course   |
| Flag U        | Special Course   |
| Flag Q        | Short Course (Windward/Leeward/Triangle or Windward Leeward Courses) |

7.3 The course number shall be displayed on a board on the race committee boat no later than the warning signal.

7.4 **All Marks to Port.** However, when a 'gate' is laid, boats shall sail between the gate marks from the direction of the previous mark and round either gate mark.

**8 MARKS.**

8.1 Start Mark:

The Start Mark will be a thin yellow cylindrical buoy.

Mark 1:

Mark 1 will be an orange cylindrical buoy.

Mark 2:

Mark 2 will be an orange cylindrical buoy.

Marks 2A & 2B:

Marks 2A & 2B will be orange cylindrical buoys.

Mark 3:

Mark 3 will be an orange cylindrical buoy.

Finish Mark:

**Windward/Leeward/Triangle – Upwind Finish** (Attachment A) and **Windward/Leeward - Upwind Finish** (Attachment D) courses, the Finish Mark will be an orange cylindrical buoy.

**Windward/Leeward/Triangle – Downwind Finish** (Attachment B) and **Windward/Leeward - Downwind Finish** (Attachment C) courses, the Finish Mark will be a thin yellow cylindrical buoy.

**Windward/Leeward – Centre Gate** (Attachment E) courses, the Finish Mark will be a thin yellow cylindrical buoy

8.2 Any mark signage or numbering shall be ignored.

**9 THE START.**

9.1. 'SHORT COURSE' races shall be started as follows: -

| Signal      | Flag and Sound                        | Minutes before Start |
|-------------|---------------------------------------|----------------------|
| Warning     | Class Flag.<br>One sound              | 3                    |
| Preparatory | P or Black<br>One sound               | 2                    |
| One Minute  | Preparatory Removed<br>One Long Sound | 1                    |
| Start       | Class Flag Removed<br>One sound       | 0                    |

- 9.2 **'STANDARD COURSE'** races shall be started by using rule 26 with the warning signal made 5 minutes before the starting signal.
- 9.3 The starting line will be between a staff displaying an orange flag on the race committee boat at the starboard end and the port-end starting mark. A safety mark displaying a yellow flag may be laid near the race committee boat. Boats approaching the starting line to start shall leave this mark on the same hand as the race committee boat.
- 9.4 Boats whose warning signal has not been made shall avoid the starting area.
- 9.5 A boat starting later than 10 minutes after her starting signal will be scored Did Not Start (DNS) without a hearing. This changes rule A4.

**10 CHANGE OF THE NEXT LEG OF THE COURSE.**

To change the next leg of the course, the race committee will lay a new mark (or move the finishing line) and remove the original mark as soon as practicable. When in a subsequent change a new mark is replaced, it will be replaced by an original mark.

**11 THE FINISH.**

The finishing line will be between a staff displaying an orange flag on the race committee boat and the finishing mark. A safety mark displaying a yellow flag may be laid near the race committee boat. If laid, boats finishing shall leave this mark on the same hand as the race-committee boat.

**12 TIME LIMIT.**

**12.1 Standard Courses:**

The first boat in each division (or class) must finish within 2 1/2 hours of the starting signal. If not, the race will be abandoned.

Boats failing to finish within forty minutes after the first boat in their division (or class) finishes, or after the time limit expires, which ever is later, shall score points equal to "Did Not Finish" (DNF) without a hearing. This changes rules 35, A4 and A5.

**12.2 Short Course Races.**

The first boat in each division (or class) must finish within thirty minutes. If not, the race will be abandoned. Boats finishing later than ten minutes after the first boat will be scored points for DNF without a hearing.

This changes rules 35, A4 and A5.

**13 PROTESTS AND REQUESTS FOR REDRESS.**

- 13.1 The protest time limit is 90 minutes after the last boat has finished the last race of the day.
- 13.2 a. Protest forms are available from the box beside the Sign In/Sign Out table. Protests shall be delivered to a member of the OTB Race Committee within the protest time limit.
- b. Scoring enquiries shall be lodged with a member of the OTB Race Committee by a REQUEST for REVIEW of RESULT form available on the table in the Cadet storage area by midday on the next working day following the race.
- 13.3 Notices will be posted on the Official OTB Notice Board as soon as practicable to inform competitors of the time and place of a hearing in which they are parties or named as witnesses.

**14 SCORING.**

- 14.1 Twenty-Three (23) races are scheduled of which ten (10) are required to be completed to constitute a series.
- 14.2 Boats that join the series after the first completed race will be awarded a "Late Entrant" score, back-filled to the first race. The "Late Entrant" score will be the Did Not Compete (DNC) score for the first race in which the boat competes. Previously allocated scores for other boats will not be altered. This changes rule A9.
- 14.3 Boats entering individual races (not the complete series) will only be eligible individual race prizes, not the series points. This changes rule A4.
- 14.4 Discards

Rule A2 is changed as follows:-

Less than 12 races completed – a boat's series score will be the total of her race scores.

12 or more races completed – a boat's series score will be the total of her race scores excluding her worst 22% of discardable scores.

- 14.5 Number of boats to start.
- |                             |                        |
|-----------------------------|------------------------|
| Less than three starters: - | No Race.               |
| Less than five starters: -  | No second place prize. |
| Less than seven starters: - | No third place prize.  |
- 14.6 Change of Boat during season.
- a. When an owner changes an entry from one boat to another of a different design during a series, the series points shall not be cumulative.
  - b. When a class boat is replaced by one of the same design during the season, the aggregate points scored will carry forward to the replacement boat. The replacement boat shall be allocated a provisional handicap until such time as a new handicap is established.
- 14.8 Handicap System.
- a. Miscellaneous OTB:  
The "Yardstick" Rating system for Miscellaneous OTB as published by Yachting Victoria will be used for computing corrected times for the season aggregate.
  - b. Miscellaneous OTB:  
A performance handicap shall be super-imposed on the Yardstick result to compute results for the season handicap aggregate. The handicap results from the first three races will be used to determine the starting handicap for each boat. This number will then be applied retrospectively according to handicap rules commencing from Race 1. This changes rule A4
  - c. International Cadets:  
For International Cadet Class Blue and Red division boats, the handicap results from the first three races will be used to determine the starting handicap for each boat. This number will then be applied retrospectively according to handicap rules commencing from Race 1. This changes rule A4
  - d. A list of entrants and their current allocated handicaps may be posted on the Official Notice Board or the Club's website before each race.
  - e. The handicaps for a rescheduled race shall be those current at the date of resail.
  - f. Across-group Handicap Relativity will be maintained between the
    - Red and Blue International Cadet fleet, and
    - The Misc OTB and Laser fleet
- 14.9 Change of Helmsperson
- a. An International Cadet Class helmsperson shall not be changed
  - b. Change of Helmsperson. (Miscellaneous OTB)  
If the normal helmsperson is to be substituted by anyone who is not a member of the normal crew, the Race Officer shall be notified in writing, at least two hours before the effected race.  
"Normal crew" is defined as a person who has sailed at least 5 races aboard the boat in question within the previous 12 months.
- 14.10 Changes Affecting Handicap
- The Race Officer shall be notified in writing, at least two hours before the race where any of the following changes are made.
- Change of crewperson.
  - Any substantial hull or rig change that could alter the anticipated performance on which the handicap has been predicted.  
Substantial changes would include (but not limited to)
    - Removal / addition of ballast
    - New Mainsail

- More than one new headsail / spinnaker

Failure to advise any changes may result in a 5% loading on the elapsed time for that boat for the effected race.

14.11 Results.

Provisional results may be displayed on the Official Notice Board or Club's Web Site.

**15 SAFETY REGULATIONS.**

15.1 It is **mandatory** for **ALL competitors** to wear category 1, 2 or 3 Personal Flotation Devices whilst on the water.

15.2 A Sign in / Sign out sheet will be located on the table in the Cadet storage area. The skipper (or crew) of each boat shall "Sign Out" on this sheet prior to leaving the shore, and "Sign in" at the completion of racing, prior to the close of protest time.

15.3 Prior to starting, boats shall "report" their intention to race by hailing their sail number to the race committee boat, after it is on station at the starting line, and shall have their hail acknowledge.

**Failure to Sign-Out, Sign-In or "Report" shall result in the boat being scored points equal to Did Not Compete (DNC) without a hearing. This changes rules A4, A5 and 63.1.**

15.3 A boat that retires from a race shall notify a rescue boat operator, the race committee boat or the R.G. Base Radio Operator as soon as possible.

**16 EQUIPMENT AND MEASUREMENT CHECK.**

A boat or equipment may be inspected at any time for compliance with the class rules and these sailing instructions.

**17 OFFICIAL BOATS.**

Official boats may display the RGYC burgee.

**18 RADIO COMMUNICATION.**

Except in an emergency, a boat shall neither make radio transmissions while racing nor receive radio communications not available to all boats. This restriction also applies to mobile telephones.

VHF Channel 73 will be used for race management communication.

**19 PRIZES.**

Prizes will be given as follows

19.1 **Miscellaneous OTB.**

Trophies will be as listed in the RGYC Event Calendar 2011 - 2012.

19.2 **International Cadet.**

Trophies will be as listed in the RGYC Event Calendar 2011 - 2012.

19.3 Special nominated trophies and other additional trophies may be awarded.

**20 DISCLAIMER OF LIABILITY.**

Competitors participate in the series entirely at their own risk. See rule 4, "Decision to Race". The organizing authority will not accept any liability for material damage or personal injury or death sustained in conjunction with or prior to, during, or after the series.

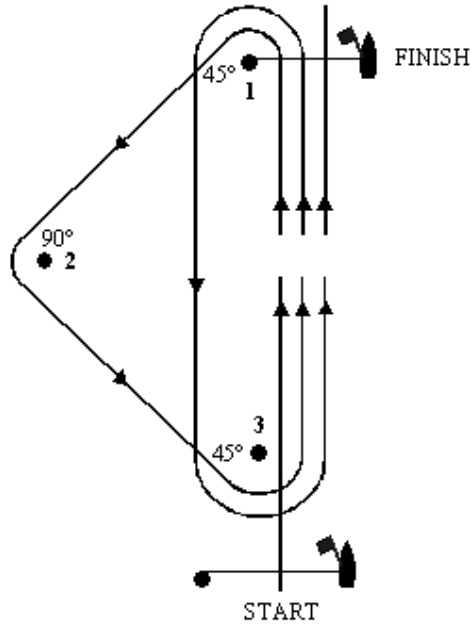
**21 INSURANCE.**

Each participating boat shall be insured with valid third-party liability insurance with a minimum cover of \$10,000,000 per event or the equivalent.

# Attachment 'A'

## Windward/Leeward/Triangle - Upwind Finish

Table 1 specifies the order in which marks must be passed or rounded



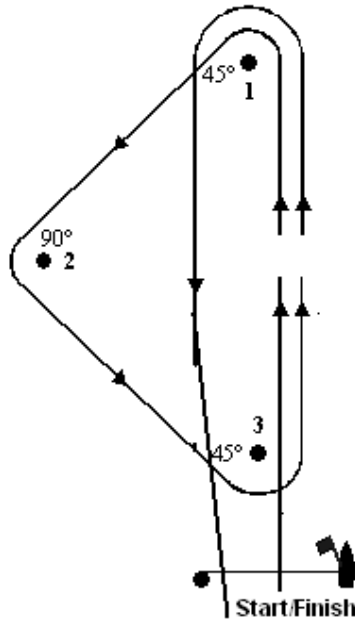
| Course No. | Course Configuration   |
|------------|--|
| 4          | Start - 1 - 2 - 3 - Finish   |
| 6          | Start - 1 - 2 - 3 - 1 - 3 - Finish                                 |
| 9          | Start - 1 - 2 - 3 - 1 - 3 - 1 - 2 - 3 - Finish                     |
| 12         | Start - 1 - 2 - 3 - 1 - 3 - 1 - 2 - 3 - 1 - 2 - 3 - Finish         |
| 14         | Start - 1 - 2 - 3 - 1 - 3 - 1 - 2 - 3 - 1 - 3 - 1 - 2 - 3 - Finish |

Table 1

## Attachment 'B'

### Windward/Leeward/Triangle - Downwind Finish

Table 2 specifies the order in which marks must be passed or rounded



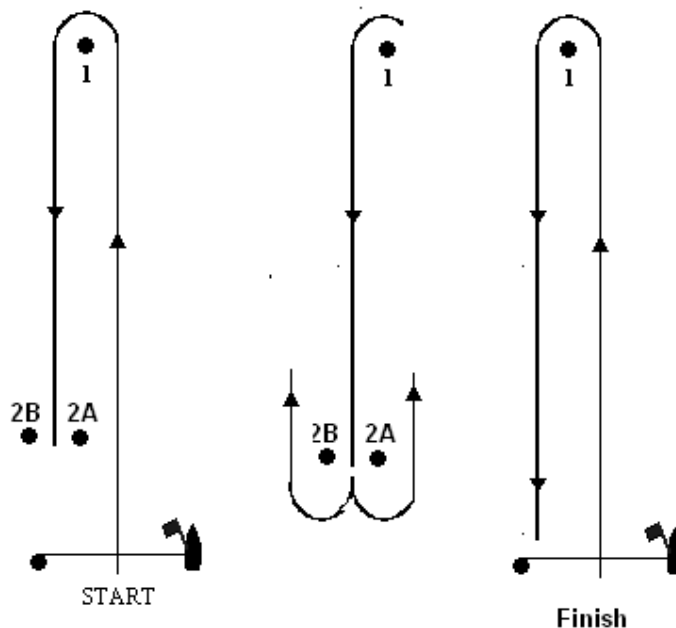
| Course No. | Course Configuration                   |
|------------|--|
| 5          | Start - 1 - 2 - 3 - 1 - Finish         |
| 7          | Start - 1 - 2 - 3 - 1 - 3 - 1 - Finish |

Table 2

## Attachment 'C'

### Windward/Leeward Down-Wind Finish

Table 3 specifies the order in which marks must be passed or rounded



**Marks 2A and 2B form a "Gate".**

Boats shall sail between the gate marks from the direction of the previous mark, and round either gate mark.

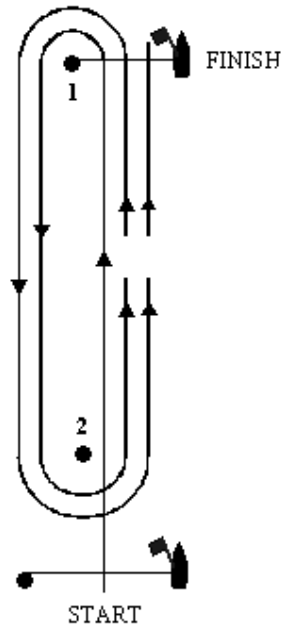
| Course No. | Course Configuration   |
|------------|--|
| 4          | Start – 1 – gate – 1 – Finish                                  |
| 6          | Start – 1 – gate – 1 – gate – 1 – Finish                       |
| 8          | Start – 1 – gate – 1 – gate – 1 – gate – 1 – Finish            |
| 10         | Start – 1 – gate – 1 – gate – 1 – gate – 1 – gate – 1 – Finish |

Table 3

## Attachment 'D'

### Windward/Leeward Up-Wind Finish

Table 4 specifies the order in which marks must be passed or rounded



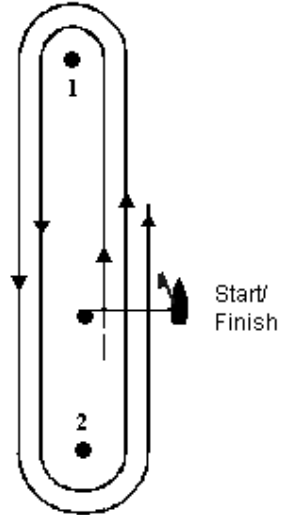
| Course No. | Course Configuration                                   |
|------------|--|
| 5          | Start – 1 – 2 – 1 – 2 – Finish                         |
| 7          | Start – 1 – 2 – 1 – 2 – 1 – 2 – Finish                 |
| 9          | Start – 1 – 2 – 1 – 2 – 1 – 2 – 1 – 2 – Finish         |
| 11         | Start – 1 – 2 – 1 – 2 – 1 – 2 – 1 – 2 – 1 – 2 – Finish |

Table 4

## Attachment 'E'

### Windward/Leeward Centre-Gate Start and Finish

Table 5 specifies the order in which marks must be passed or rounded



| Course No. | Course Configuration   |
|------------|--|
| 5          | Start - 1 - 2 - Gate - 1 - 2 - Finish  |
| 7          | Start - 1 - 2 - Gate - 1 - 2 - Gate - 1 - 2 - Finish                               |
| 9          | Start - 1 - 2 - Gate - 1 - 2 - Gate - 1 - 2 - Gate - 1 - 2 - Finish                |
| 11         | Start - 1 - 2 - Gate - 1 - 2 - Gate - 1 - 2 - Gate - 1 - 2 - Gate - 1 - 2 - Finish |

Table 5