



*Royal Geelong Yacht Club*

*ALPHA COURSE*  
*SAILING INSTRUCTIONS*

**Season 2011 / 2012**

Royal Geelong Yacht Club Inc.  
Eastern Beach, Geelong, Victoria  
Ph: (03)5229 3705 Fax: (03)5223 2769  
Web: [www.rgyc.com.au](http://www.rgyc.com.au)

**INDEX**

	<b>Page</b>
Revision Record.....	3
1. Rules .....	4
2. Eligibility and Entry .....	5
3. Notices To Competitors.....	6
4. Changes To Sailing Instructions .....	6
5. Signals Made Ashore.....	6
6. Schedule Of Races.....	7
7. Class Flags .....	7
8. Racing Area.....	7
9. Courses .....	8
10. Marks .....	9
11. Areas That Are Obstructions.....	10
12. The Start.....	10
13. Change Of The Next Leg Of The Course .....	11
14. Special Procedure for Shortening a Club Course.....	11
15. The Finish.....	11
16. Penalty System .....	11
17. Time Limit .....	12
18. Protests And Requests For Redress.....	12
19. Scoring.....	12-16
20. Safety Regulations.....	17
21. Equipment and Measurement Checks.....	17
22. Official Boats .....	17
23. Radio Communications .....	18
24. Man Overboard Safety Procedure .....	18
25. Prizes .....	18
26. Disclaimer Of Liability.....	18
27. Insurance .....	18
Attachment 1 (W- L-T) Standard & Short Beat.....	19
Attachment 2 (W & L) Type A .....	20
Attachment 3 (W & L) Type B .....	21
Attachment 4 (W & L) Long Beat & Short Beat.....	22
Attachment 5 (W & L) Back to Back Races .....	23
Attachment 6 (Courses) .....	24-27
Attachment 7 (Twilight Series) .....	28-29
Attachment 8 (Tuff Marine Series).....	30-31
Attachment 9 Box Start & Finish Line.....	32

Note:

Winter Series and McAllister Trophy (Queenscliff Race) sailing instructions will be issued separately.

**Revision Record**

<i>Rev No</i>	<i>Revision Date</i>	<i>Clause Affected/Notes</i>
1	21 Sept 2011	Initial Release
2	13-Oct-2011	Changes in BLUE
3	26-Oct-2011	Changes in PURPLE
4	14-Dec-2011	Changes in RED

## 1.1 RULES

Races will be governed by the rules as defined in *The Racing Rules of Sailing (RRS)* and the special regulations of Yachting Australia (Y.A.) part 1.

## 1.2 Boats in Danger

A boat in danger because it cannot make way or is becalmed in the path of a commercial ship that has right of way may use any alternative means of propulsion to avoid collision provided:

- (a) Propulsion is used to drive the boat the minimum distance necessary to avoid collision.
- (b) The course taken is no closer than 90 degrees to the direction of the next mark
- (c) The boat completes a two-turn penalty immediately on resumption of sailing.

## 1.3 (a) Etchells class, Rule 6 (f) is changed as follows:

VHF radios are required, and shall be monitored at all times.

(b) Add to rules 50.2 & 50.3: Fixed and retractable spinnaker poles not attached to the foremost mast shall be permitted for the purpose of setting asymmetrical spinnakers.

(c) Rule 52: Shall not apply.

## 1.4 Y.A. Special Regulations Categories

- (a) Day Races for Div's 1 & 2 on inner and outer Corio Bay – Category 5
- (b) Etchells - Category 7 plus VHF Radio
- (c) Twilight races - Category 5
- (d) Evening Races including Tuff Marine within Corio Bay - Category 5N
- (e) Night races beyond Corio Bay - Category 4
- (f) Two-Handed races - Category 5
- (g) Winter Series Races - Category 5
- (f) Corio Cruising Division – Category 5

## 1.5 Safety Requirements:-

- (a) Suitable personal flotation devices (PFD) shall be worn at night and whenever conditions make working on deck difficult or when crew capability is reduced.
- (b) The wearing of PFD's is mandatory for every crewmember of any racing boat not equipped with lifelines.
- (c) Transport Safety Victoria regulations regarding PFD's apply at all times.
- (d) Deck-stowed anchors shall not protrude beyond the gunwale or bow of a racing boat.
- (e) It is recommended that boats carry a ladder suitable for the purpose of retrieving a man overboard.

**1.6 Boat Owner Obligations**

The owner or person in charge of a boat found to have impeded the operation of commercial shipping shall be responsible for any and all financial obligations resulting from the reported incident.

**1.7 Before a boat's first race of the season.** Boats intending to compete shall report to the race officials on the Race Committee vessel with all crew wearing a PFD before her warning signal. Crew may remove their PFD's when acknowledged by race officials unless Flag Y is displayed from the Race Committee vessel.

Boats failing to comply shall be scored Did Not Compete (DNC) without a hearing. This changes rules A4, A5, and 63.1

**2 ELIGIBILITY AND ENTRY**

**2.1 Entry**

- (a) Entries are to be submitted via the club web site: [www.rgyc.com.au](http://www.rgyc.com.au)  
Accepted entries will be acknowledged by email.
- (b) Block entry forms shall be lodged prior to 1700 hours on the Wednesday preceding the first race being entered.
- (c) All other race entries shall be lodged prior to 1700 hours two days prior to the race.
- (d) Safety Equipment Declaration and Insurance documentation shall be submitted at the RGYC main office prior to 1700 hours two days prior to the race.

**2.2 Sail Identification**

- (a) A change of sail number shall be notified to the Race Officer in writing, prior to the warning signal. Failure to comply with this rule may result in the boat being scored DNC by the race committee without a hearing. This changes rules A4, A5 and 63.1
- (b) Boats displaying numbers other than the sail number recorded on the Club boat register, may be scored DNC by the race committee without a hearing. This changes rules A4, A5 and 63.1
- (c) A boat new to the Club shall display the Club allocated sail number prior to competing in its fourth race or within six months of being placed on the Club boat register, whichever is earlier. Failure to comply with this rule may result in the boat being scored DNC by the race committee without a hearing. This changes rules A4, A5 and 63.1

**2.3 Crews Membership Restrictions**

**In addition to the prescription of Yachting Australia in rule 55, the following apply.**

- (a) At the time of the race, financial RGYC members, in any categories other than Social, may participate in all Club racing.
- (b) All others may sail in the Wednesday Twilight Series and up to 3 other races per sailing season when signed into the Crew Register book located at the General Office, prior to the event.
- (c) Members under Disciplinary Suspension are not eligible to sail.

**2.4 Crewing Restrictions**

The minimum number of persons onboard a boat racing shall be two.

**3 NOTICES TO COMPETITORS**

Will be posted on the official notice board located east of the Club's slipway.

**4.1 CHANGES TO SAILING INSTRUCTIONS**

Subject to Sailing Instruction 4.2, any change to the Sailing Instructions will be posted before 0900 on the day it will take effect, except that any change to the schedule of races will be posted with four (4) days clear notice.

**4.2** Under special circumstances the race officer may issue a change of sailing instructions from the race committee boat by displaying Flag 3rd substitute with three sounds and communicating instructions by radio.

**5 SIGNALS MADE ASHORE**

**5.1** Signals made ashore will be displayed at the Flag Mast situated in the North-West corner of the Club's Property.

**5.2** When Flag AP is displayed ashore, '1 minute' is replaced with 'not less than 45 minutes' in the Race Signal AP.

**5.3** In uncertain weather, Flag H will be displayed pending a decision of the Race Committee. When this flag is removed, appropriate signals under rule 27.3 will be displayed when the race is to be postponed or abandoned.

**5.4** The Race Committee may substitute a non-aggregate event on the same day by displaying Flag K. Boats make their own decision to race in heavy weather refer *fundamental rule 4*.

**5.5** When Flag L over Flag U is displayed onshore, the starting line will be between the Signal Box situated on the North-West corner of the Marina breakwater and the Yellow West cardinal mark to the North-West of the Signal Box.  
Refer Attachment 9

**6 SCHEDULE OF RACES**

- 6.1 Races are scheduled as per the Event Calendar on the Club's Web Site.
- 6.2 The scheduled times of the race **warning** signals are:

<b>Division</b>	<b>Time</b>
Summer Series Division One	As Per Event Calendar
Summer Series Etchells	As Per Event Calendar
Summer Series Division Two	As Per Event Calendar
Summer Series Corio Cruising Div	As Per Event Calendar
Twilight series, Multihulls (Cats on the Prowl)	1755 hours
Tuff Marine Series	1855 hours
Two-Handed Series	1255 hours
Special Course events	As Per Separate SI's
Winter Series	As Per Separate SI's

**6.3 Resailed Races**

- (a) The handicaps for a rescheduled race shall be those current at the date of resail.
- (b) Twilight, Tuff Marine, and Two-Handed Series races **will not** be rescheduled.

**6.4 Back to Back Races**

When Flag L is displayed on the Race Committee boat at the finish line, another race will be started following completion of the current race. This will be removed with one sound, 1 minute before the new warning signal.

**7 CLASS FLAGS**

<b>Class/Division</b>	<b>Class Flag</b>
Division One	Flag V
Etchells	Flag with Etchells Insignia
Division Two	Flag G
Corio Cruising Div.	Flag W
Tuff Marine Series	Flag T
Two-Handed Series	Flag J
Winter Series Division 1	Flag V
Winter Series Division 2	Flag G
Combined Starts	Flag J

**8 RACING AREAS**

The racing area will be on Port Phillip and Corio Bay.

**9 THE COURSES**

**9.1 Attachments 1, 2, 3, 4, 5 and 6** describe the courses to be sailed.

*Special Course* events will have supplementary sailing instructions issued separately.

**9.2 Course Signals**

The following signals shall be used to signify the course to be sailed:

Signal	Course
Naval Numeral 1	Club Course No 1
Naval Numeral 2	Club Course No 2
Naval Numeral 3	Club Course No 3
Naval Numeral 4	Club Course No 4
Naval Numeral 5	Club Course No 5
Naval Numeral 6	Club Course No 6
Numeral Pennant 6	Pursuit Course
Numeral Pennant 7	Special Course
Numeral Pennant 8	Windward-Leeward Course (Type A)
Numeral Pennant 9	Windward-Leeward Course (Type B)
Numeral Pennant 0	<b>Standard</b> Windward-Leeward-Triangle Course
Flag O	<b>Short Beat</b> Windward-Leeward-Triangle Course
Flag U	Windward-Leeward (Long Beat) Course
Flag K	Windward-Leeward (Short Beat) Course
Flag D	Windward-Leeward Back to Back races

**9.3** Flag E with Class Flag - The designated course for that class or division **plus** one leeward and one windward leg extra.

**9.4** Flag R with the Club Course or Pursuit Course signal means the course is to be sailed in reverse.

**9.5** When a course flag is displayed together with a class flag the course designated applies to that class only.

**9.6** The Race Committee Boat may display the approximate compass bearing to the first mark.

**9.7** Red Flag. All marks left to Port.

**9.8** Green Flag. All marks left to Starboard.

**9.9** For a programmed club course event, when in addition to the course signal Flag U is displayed with a red or green flag: - The course is increased to include an initial short beat from the starting line to a large inflatable mark laid to windward. This mark is to be rounded in accordance with the red or green flag displayed.

**10 MARKS**

Start Mark:

Windward-Leeward-Triangle and Windward-Leeward courses the Start Mark will be a red and white air bag.

Club courses the Start Mark will be a "Pains Wessex" branded yellow air bag.

Mark 1:

Will be a "Pains Wessex" branded yellow air bag.

Mark 1a:

Will be an orange air bag.

Mark 2:

Windward-Leeward-Triangle courses Mark 2 will be a yellow air bag.

"Long Beat" and "Short Beat" Windward-Leeward courses Mark 2 will be a red and white air bag.

Mark 3:

Will be a red and white air bag.

Gate Marks (2S & 2P)

Will be orange and white air bags.

New Mark as provided in instruction 13 will be an orange or yellow air bag with a black band.

Finish Mark:

Windward-Leeward type "Long Beat" and "Short Beat" plus all Windward-Leeward-Triangle courses, the Finish Mark will be a "Pains Wessex" branded yellow air bag.

Windward-Leeward Type "A" & Type B" courses the Finish Mark will be a Red and White air bag.

Additional Marks

Yellow West cardinal situated 38°08.16' S, 144°22.01'E

Channel Beacons: Numbered single-pile beacons mark the Wilson Spit, Point Richards, Hopetoun, Corio and City Channels.

North Channel Piles: The *four* red single piles marking the southern boundary of the North Channel in Corio Bay.

North Channel Pile: A single pile situated 38°05.87'S, 144°24.7'E, which is the most westerly red pile of the North Channel.

Artificial Cut Beacon: A Green pile situated 38°06.30' S, 144°27.20'E

RED City Channel Lead light: A red cone situated 38°08.09' S, 144°21.5'E

CB 1: (Corio Bay Recreational Beacon No 1) situated 38° 05.65' S, 144°24.20' E. A yellow moored buoy (approx. 1.5m high) with light.

CB 2: (Corio Bay Recreational Beacon No 2) situated 38°07.72' S, 144°24.29'E. A yellow moored buoy (approx. 1.5m high) with light.

CB3: Club Mark 38° 05.85'S, 144° 27.97' E Laid Mark (Orange or Yellow Buoy)

CB4: Club Mark 38° 06.48' S, 144 29.62' E Laid Mark (Orange or Yellow Buoy)

CB5: Club Mark 38° 07.72' S, 144 27.07' E Laid Mark (Orange or Yellow Buoy)

CB6: Club Mark 38° 08.48' S, 144 28.28' E Laid Mark (Orange or Yellow Buoy)

CB7: Club Mark 38° 09.12' S, 144 29.55' E Laid Mark (Orange or Yellow Buoy)

Curlewis Bank Pile: A single pile situated 38° 08.30' S, 144° 26.60' E

Explosives Outer Beacon: A green three pile beacon situated 38° 05.8'S, 144° 33.1' E

Mark locations shown in this clause are approximate and should be used as an aid only in the identification of course marks. Accurate positions should be determined from Chart AUS157

## 11 AREAS THAT ARE OBSTRUCTIONS

The following areas are designated as obstructions.

- **A total exclusion zone** exists to the west of Corio Channel Beacons numbers 7, 9, 10 and 11 and encompassing the Refinery Pier and northern end of Lascelles wharf.  
*A fine of up to \$10,000 may be imposed for entry to this area, accidental or not. The area is under constant video surveillance and competitors must make themselves aware of the exact zone limits.*
- The Point Wilson Explosives Pier is surrounded by an exclusion zone of 300 metres when no ships are present, and 1400 metres to the East and South, and 2000 metres to the north two hours prior to arrival and whilst ships are docked.
- When shipping is expected and present the extended exclusion zone is activated and the perimeter yellow buoys will show a quick flashing light (Quick flash 3 seconds.)

## 12 THE START

### 12.1 Starting Procedures

- **Summer Series, Tuff Marine Series, Two-Handed Series and Winter Series**  
Races will be started by using rule 26 with the warning signal made five minutes before the starting signal.
- **Pursuit Event Start**  
Twilight series, refer to Attachment 7.
- Other events refer to special Sailing Instructions.

### 12.2 Summer Series (excluding Corio Cruising Division)

The starting line will be between the mast displaying an orange flag on the Race Committee Boat and the start mark. A yellow safety mark may be laid near the Race Committee Boat. Boats approaching the starting line to start shall leave this mark on the same hand as the Race Committee Boat.

- 12.3 Summer Series Corio Cruising Division races.** The starting line will be between the Signal Box situated on the North-West corner of the Marina breakwater and the ‘Yellow West cardinal mark’ to the North-West of the Signal Box.  
**Refer Attachment 9**
- 12.4 Two-Handed Series races.** The starting line will be between the Signal Box situated on the North-West corner of the Marina breakwater and the ‘Yellow West cardinal mark’ to the North-West of the Signal Box.  
**Refer Attachment 9**
- 12.5** Boats whose warning signal has not been made shall avoid the starting area.
- 12.6** A boat starting later than 10 minutes after her starting signal will be scored ‘Did Not Start’ (DNS). This changes rules A4, A5 and 63.1
- 13 CHANGE OF THE NEXT LEG OF THE COURSE**  
To change the next leg of the course, the race committee will lay a new mark (or move the finish line) and remove the original mark as soon as practicable. When in a subsequent change a new mark is replaced, it will be replaced by an original mark.
- 14 SPECIAL PROCEDURE FOR SHORTENING A CLUB COURSE**  
When the race committee signals a shortened course at a rounding mark and displays Flag S over Flag H, boats shall round that mark and then proceed direct to the finishing line described in 15.1. This changes rule 32.2.
- 15 THE FINISH**
- 15.1 Two-Handed, Corio Cruising Division and Club Courses**—The finishing line will be between the Signal Box on the North-West corner of the Marina breakwater and the outer end of Cunningham Pier. Boats shall cross the finishing line in a generally Southerly direction, leaving the North Cardinal Mark (near the north-west corner of the Marina) to port.  
**Refer Attachment 9**
- 15.2 All other courses** the finishing line will be between a staff displaying an orange flag, on the Race Committee Boat, and the finish mark.
- 16 PENALTY SYSTEM**
- 16.1 Rule 64.1 (a) is changed to:**  
When the protest committee decides a boat that is a *party* to a protest hearing has broken a *rule*, it shall disqualify her or impose any lesser penalty.  
A penalty shall be imposed whether or not the applicable rule was mentioned in the protest.

**17 TIME LIMITS**

**17.1 Summer Series**

**(a) Windward-Leeward-Triangle and Windward-Leeward course races.**

The time limit for the first boat in a division (or class) to sail the course and finish is three hours.

**(b)** Time limits for other courses are as per the course instructions. (Refer attachment 6)

**(c)** Boats finishing later than sixty minutes after the first boat in their division (or class) sails the course and finishes or after the time limit expires, whichever is later, shall be scored Did Not Finish (DNF). This changes rules 35, A4 and A5.

**(d) For Back-to-Back Races** the time limit for the first boat in a division (or class) to sail the course and finish is one hundred minutes. Boats failing to finish within thirty minutes after the first boat in their division (or class) sails the course and finishes will be scored Did Not Finish (DNF). This changes rules 35, A4 and A5.

**17.2 Twilight Series**

As per attachment 7

**17.3 Winter Series**

As per supplementary sailing instructions

**17.4 Tuff Marine Series**

As per attachment 8

**17.5 Two-Handed Series**

The first boat must finish within the time limit for that course. Boats finishing later than sixty minutes after the first boat sails the course and finishes shall be scored Did Not Finish (DNF). This changes rules 35,A4 and A5

**18 PROTESTS AND REQUESTS FOR REDRESS**

**18.1** Protest forms are available from the box beside the results notice board located at the rear of the Club's main bar. Protests shall be delivered to the Race Officer, Club Captain, Chair of Yachting and Boating Committee or the Sailing Manager within the protest time limit (see 18.2).

**18.2 (a)** For Div 1 & 2 and Etchells the protest time limit is 90 minutes after the last boat has finished the last race of the day.

**(b)** For Corio Cruising Division the protest time limit is 90 minutes after the last boat in this division finishes.

**18.3** Notices will be posted within 48 hours of the protest time limit to inform competitors of the date, time and place of hearings in which they are *parties* or named as witnesses.

**18.4** Boats requesting redress regarding their scored finishing position in a race may lodge a completed "Request For Review Of Result" form with the Sailing Manager as soon as practicable but no later than 1200 on the first working day after the race. Forms are available from the box beside the results notice board located at the rear of the Club's main bar.

**19 SCORING**

The Low Point System of scoring as described in Appendix A will apply, as modified by the following clauses:-

- 19.1** Boats that join the series after one or more completed races will be awarded a “Late Entrant” score for each earlier race. The “Late Entrant” score will be the Did Not Compete score for the first race in which the boat competes. Previously allocated Did Not Compete scores will not be altered.
- 19.2(a)** Only boats listed on the Club boat register will be eligible to score aggregate points.
- (b)** Boats shall be eligible for points from the date of their register application.
- 19.3** Boats entering individual races but not a complete series will qualify for individual race prizes but are excluded from series aggregate points.
- 19.4** DISCARDS and number of races required to be completed to constitute a series.  
Rule A2 is amended by the following:-  
A boats series score shall be the total of her race scores excluding her worst scores (discards).

**(a)** RGYC Etchells fleet, discards for their own Pre and Post Christmas Series, shall be as below.

Number of races completed	Discards
Pre Christmas races	One after 5 completed races and two after 9 completed races.
Post Christmas races	One after 5 completed races and two after 9 completed races.
Pre & Post Christmas	One completed race constitutes a series.

**(b)** *Summer Series* – Div. 1, Div. 2, Etchells & Corio Cruising Div. discards will be:

<i>Races Completed</i>	<i>Discards</i>
17 or more	5
15 or 16	4
13 or 14	3
11 or 12	2
10	1
9	0
Less than 9	No series

**(c)** *Twilight Series*.

- Pre-Christmas aggregate: one discard. One competed race constitutes a series.
- Post-Christmas aggregate: one discard. One competed race constitutes a series.
- Overall Series:

<i>Races Completed</i>	<i>Discards</i>
17 or more	4
13, 14,15 or 16	3
11 or 12	2
10	1
5 to9	0
If less than 5	No series

(d) *Winter Series.*

<i>Races Completed</i>	<i>Discards</i>
9 or 10	2
6, 7 or 8	1
4 or 5	0
Less than 4	No series

(e) *Tuff Marine Series and Two-Handed Series*

<i>Races Completed</i>	<i>Discards</i>
8 or more	2
5, 6 or 7	1
4	0
Less than 4	No series

**19.5 Number of Boats to Start**

(a) *Summer Series Races*

**I. Divisions 1, 2 & Etchells**

Less than **Three** starters in a division or class - No Race

At least six starters in a division or class for a second place prize

At least seven starters in a division or class for a third place prize

**II. Corio Cruising Division**

Less than three starters – No Race

(c) *Twilight Series, Winter Series, Tuff Marine Series, or Two-Handed Series*

Less than five starters in a division or class – No Race

(d) *Programmed special events*

Less than five starters – No Race

**19.6 Change of Boat during season**

- (a) When an owner changes an entry from one boat to another during the season the aggregate points shall not be cumulative in Division 1, 2, Corio Cruising Division, IRC, or AMS.

- (b) When a class boat is replaced by one of the same design during the season the aggregate points scored will carry forward to the replacement boat. The replacement boat shall be allocated a provisional handicap until such time as a new handicap is established.

**19.7 Dispensation for boats competing in away events**

Boats undertaking racing or delivery to Yachting Australia recognised events on or during the RGYC club season may apply in writing to the Yachting and Boating Committee for an allocated race score.

A boat may be given an allocated race score as follows:-

- (i) The boat's allocated race score shall be the average of her scores in the ten (10) races in that series immediately prior to the race for which an average score is requested.
- (ii) If ten (10) races have not been conducted prior to the date of the requested event the boat's allocated race score shall be the average of her scores for the first ten (10) races in that series.

**19.8 Handicap System**

- (a) The RGYC Yachting & Boating Committee shall appoint a Handicap Committee to be responsible for determination of handicaps.
- (b) Except for I.R.C., A.M.S. & Class Championship events, scores will be determined using, at the Handicapper's discretion, Yachting Victoria Performance Handicaps or a local variation.

Description of the Y.V. handicapping system is available via the following link:

<http://www.clubmarineseries.com.au/site/yachting/clubmarineseries/downloads/2011-12/VYC%20HCP%20RULES%202011-2012%20Issue%201.pdf>

- (c) Boats shall not request redress in respect of the YV Performance Based Handicaps unless they have complied with all sections of rule 12 of the YV Keelboat Performance Handicap Rules 2011/2012 in regard to the handicap in question. This changes rule 62.
- (d) Boats will be allocated to divisions by the Club Handicapper.  
A list of division entrants will be published on the club web site by 2000 hrs on the day prior to the first race.
- (e) Handicaps may be published on the club web site by 2000 hrs on the day prior to the individual race.

### 19.9 Changes Affecting Handicap

(a) The Club Handicapper shall be notified, preferably in writing, at least three hours before the race where any of the following changes are made.

- Change of Helmsperson

If the normal helmsperson is to be substituted by anyone who is not a member of the normal crew.

*Member of the normal crew is defined as a person who has completed at least 5 races aboard the boat in question within the current sailing season.*

- Other Changes

Any substantial change to hull or rig which is likely to change performance.

Substantial changes would include (but not limited to)

- Removal / addition of ballast
- New Mainsail
- More than one new Headsail / spinnaker
- New keel or rudder
- Change to waterline length
- Changes to rig

(b) Failure to advise the Club's Handicapper of any changes may result in a 5% loading on the elapsed time for that boat for the effected race.

(c) A penalty place system will be used for the Twilight and Winter Series.

- Twilight Series Penalties will be 3% for first, 2% for second and 1% for third place.
- Winter Series will be 2% for first, 1.5% for second and 1% for third place.

These penalties will be in addition to the normal AHC's calculated by the YV handicap formula.

### 19.10 Crew Declarations

(a) For each Summer Series event, the owner / skipper or an authorised person in charge as per rule 46, shall submit a declaration containing

- The boat's name
- The sail number
- The given name, surname and membership status (or receipt number) of each person aboard

(b) This Declaration shall be lodged in the box provided on the main bar, or by email (sailingoffice@rgyc.com.au) or by facsimile - no later than 1000 hours on the first business day following the race.

(c) Boats failing to lodge such a declaration may be scored DNC by the Race Committee without a hearing. This changes rule A4, A5 and 63.1

(d) Crew declarations are available from the box beside the results notice board located at the rear of the Club's main bar

**19.11 Results**

- Provisional results will be displayed on the Official Notice Board as soon as practicable.
- Officials will endeavour to post these provisional results by the morning following the race.

**20 SAFETY REGULATIONS**

**20.1 Sign- On**

- (a) **I** **Between** the hours of **1800 on Friday and 1800 on Sunday**, RGYC (RG Base) radio communication for all divisions with the exception of Corio Cruising Division will be via **VHF channel 71**.

**II Corio Cruising Division** communications will be via VHF channel 10.

(b) **Divisions 1, 2, Etchells & Corio Cruising Division**

For Summer Series Races boats departing the Marina shall notify RG Base, the name of the boat, sail number and the number of people on board. If there is no response, boats shall notify the Race Committee Boat instead.

- (c) **Twilight Series.** Boats shall notify the Race Committee Boat via VHF channel 73 of their intention to race, advising the name of the boat, sail number and the number of people onboard.

**There is no requirement to sign-off at the conclusion of racing and any such calls may not be acknowledged.**

**20.2 Sign-Off**

**Divisions 1, 2, Etchells & Corio Cruising Division**

Upon **return to the marina** boats shall notify RG Base, the name of the boat, sail number and the people on board. If there is no response, boats shall notify the Race Committee Boat.

- 20.3** Failure to sign-on or sign-off when required may result in a boat being scored DNF by the Race Committee without a hearing. This changes rules A4, A5 and 63.1.

- 20.4** A boat that retires from a race shall notify RG Base or the Race Committee Boat as soon as possible either by radio, phone or personal verbal contact.

**21 EQUIPMENT AND MEASUREMENT CHECKS**

A boat or equipment may be inspected at any time for compliance with the class rules and sailing instructions. On the water, a boat can be instructed by a Yachting and Boating Committee appointed Safety Officer to proceed immediately to a designated area for inspection.

**22 OFFICIAL BOATS**

Official boats may display the RGYC Burgee.

**23 RADIO COMMUNICATION**

- 23.1** Except in an emergency, a boat shall neither make radio transmissions while racing nor receive radio communications not available to all boats. This restriction also applies to mobile telephones.
- 23.2** Boats are encouraged to monitor VHF Channel 16 and the race channel.
- 23.3** Royal Geelong Yacht Club Base radio station, call sign “**RG Base**”, keeps a listening watch on VHF Channels 16, 71 and 73. Refer clause 20.1(a) & 20.1(b) – SAFETY REGULATIONS – for RG Base days of operation and channel use.
- 23.4** The Alpha Course Race Committee Boat will be known as “ALPHA 1”.

**24 MAN OVERBOARD SAFETY PROCEDURES.**

**It is strongly recommended that all boat crews practice, at least once before and once after Christmas, satisfactory MOB procedures – YA Special Regulations Part 1, Section 6 – Training - 6.01:2. and Appendix B**

**25 PRIZES**

Prizes will be given as per the Event Calender with the exception that the following trophies will be given for the first race completed on the scheduled day:

- Wilfred Libby Memorial Trophy – Div 1
- Mistral Bowl – Div 2

**26 DISCLAIMER OF LIABILITY**

Competitors participate in RGYC races entirely at their own risk. See Rule 4, Decision to Race. The organising authority will not accept any liability for material damage or personal injury or death sustained in conjunction with or prior to, during, or after racing.

**27 INSURANCE**

Each participating boat shall be insured with valid third-party liability insurance with a minimum cover of \$10,000,000 (\$10 million) per event or the equivalent, **plus racing risk endorsement.**

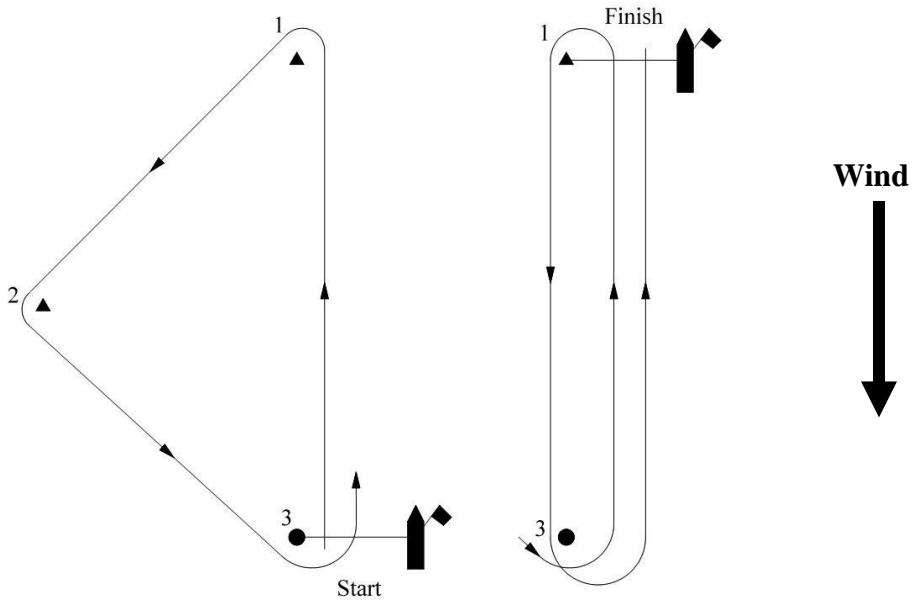
ATTACHMENT 1

**Windward-Leeward-Triangle**

**Standard**

**Numeral Pennant 0**

**Start – 1 – 2 – 3 – 1 – 3 - Finish**

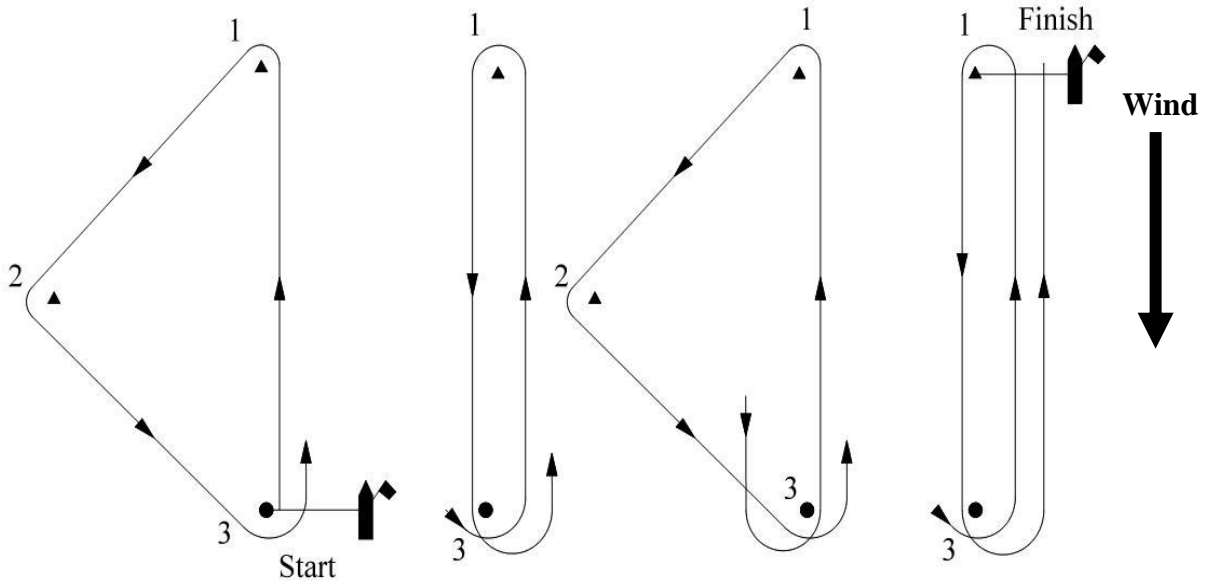


**Windward-Leeward-Triangle**

**Short Beat**

**Flag O**

**Start – 1 – 2 – 3 – 1 – 3 – 1 – 2 – 3 – 1 – 3 – Finish**



ATTACHMENT 2

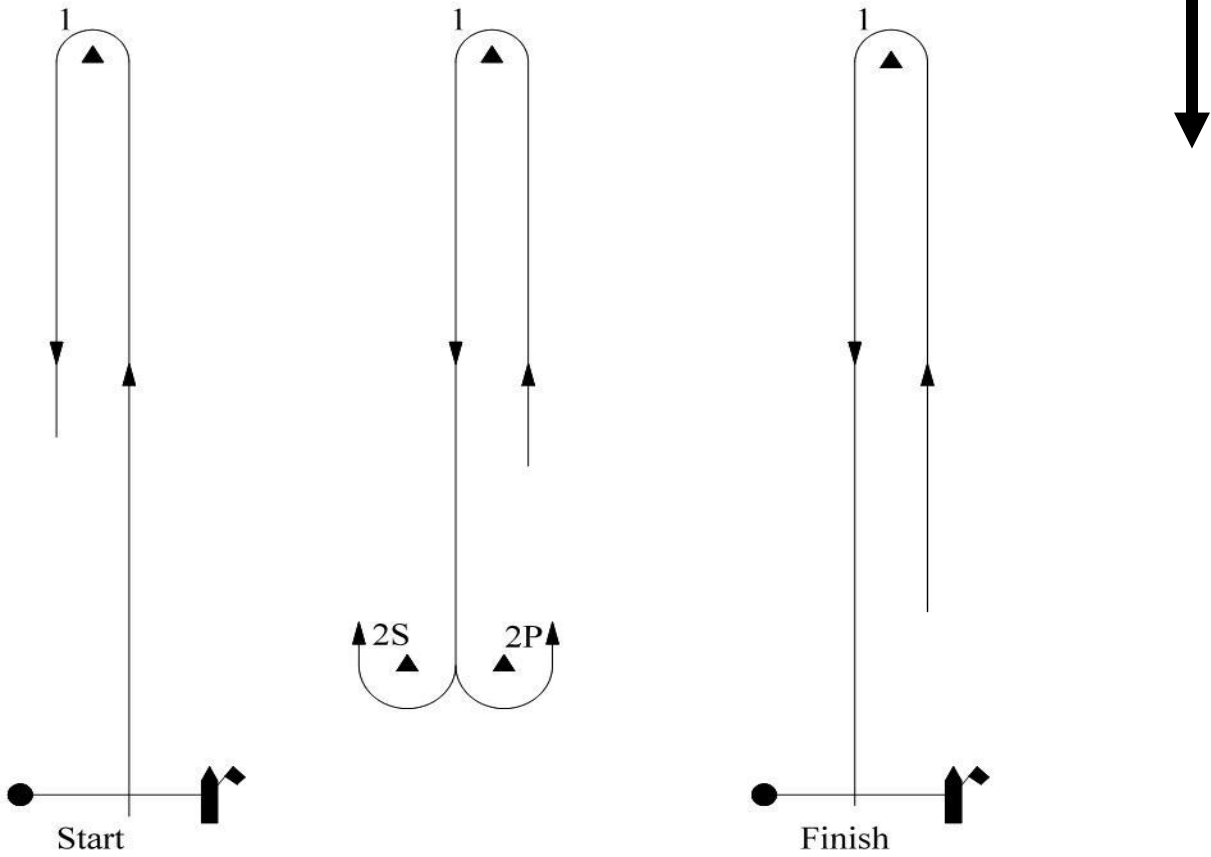
Windward-Leeward

Type 'A'

Numerical Pennant 8

Start – 1 – Gate – 1 – Gate – 1 - Finish

Wind



If one of the gate marks is missing, boats shall leave the remaining mark to PORT.

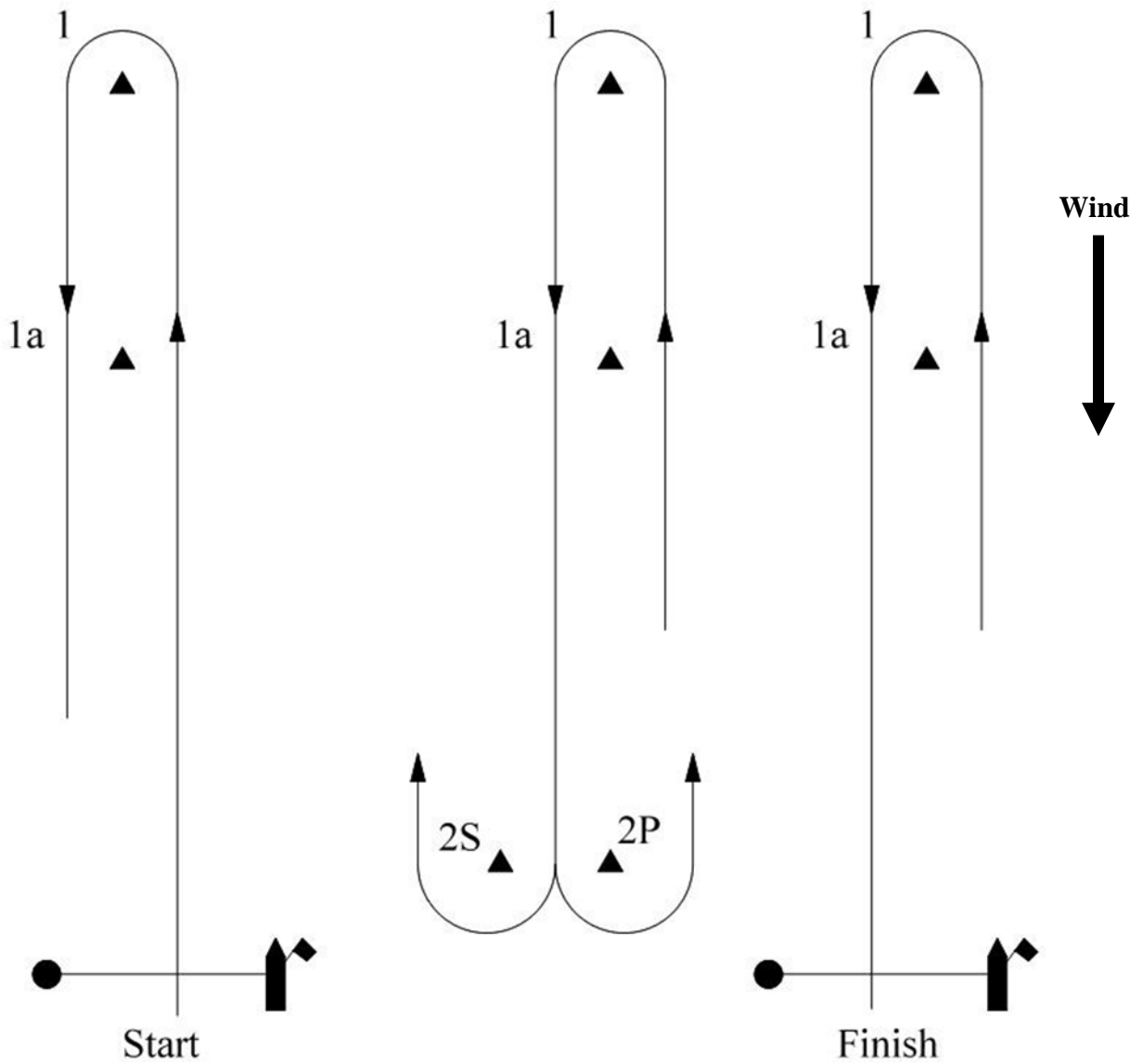
ATTACHMENT 3

Windward-Leeward

Type 'B'

Numeral Pennant 9

- Division 1 Start – 1 – Gate – 1 – Gate – 1 – Finish
- Etchells Start – 1a – Gate – 1a – Gate – 1a – Finish
- Division 2 Start – 1 – Gate – 1 – Finish



If one of the gate marks is missing, boats shall leave the remaining mark to PORT.

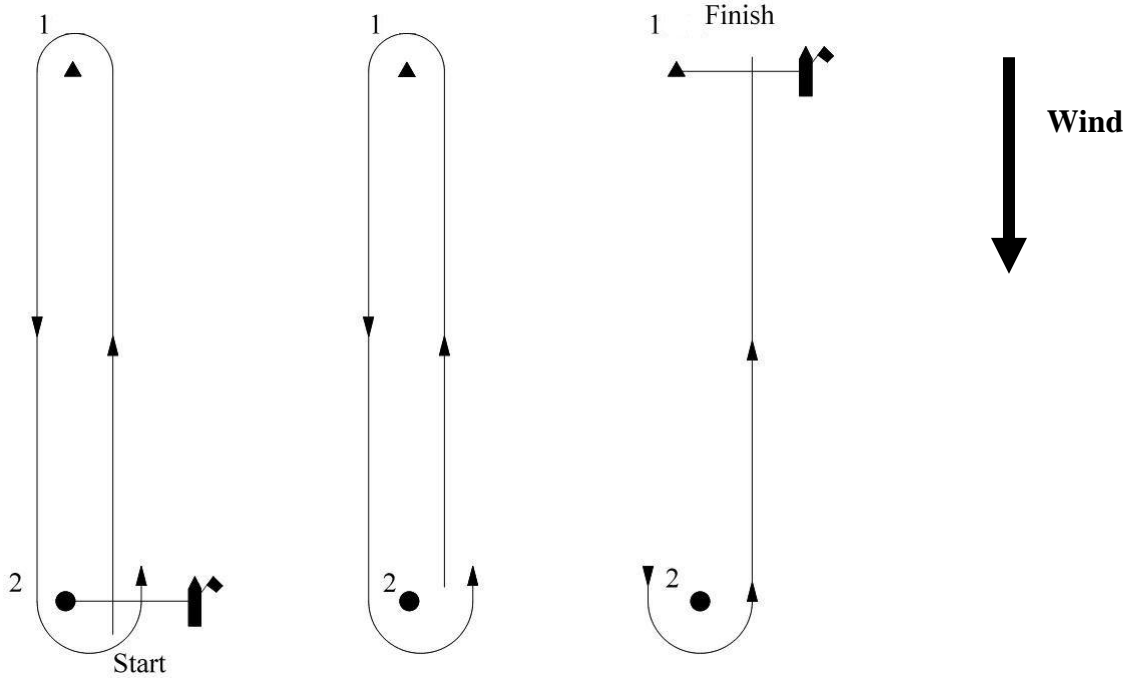
ATTACHMENT 4

**Windward-Leeward**

**Long Beat**

**Flag U**

**Start – 1 – 2 – 1 – 2 – Finish**

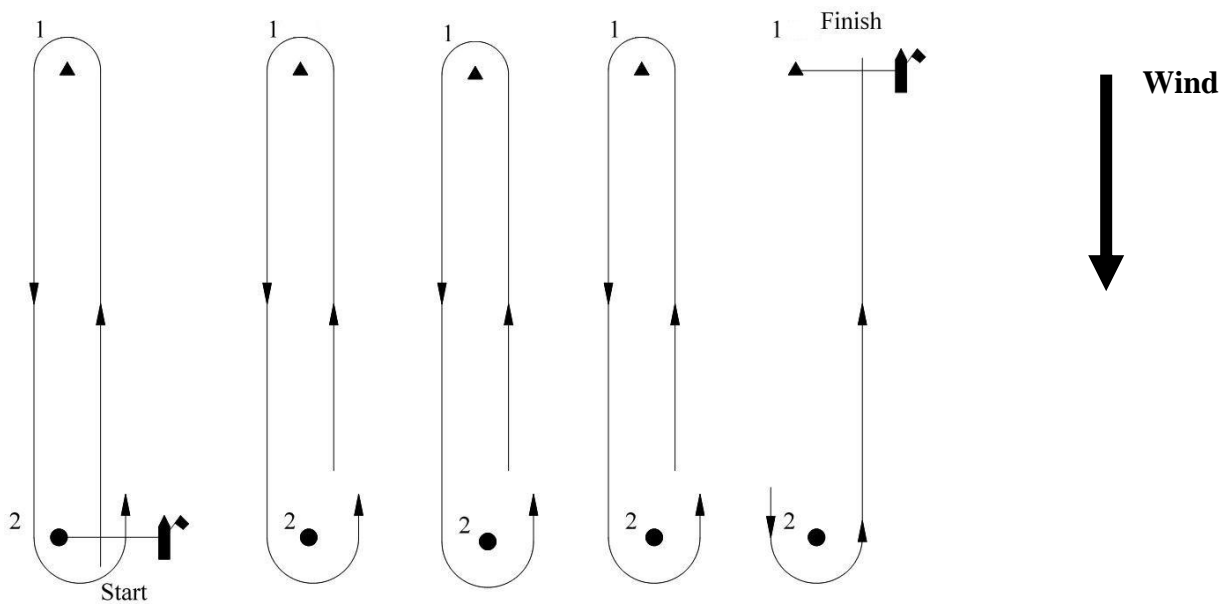


**Windward-Leeward**

**Short Beat**

**Flag K**

**Start – 1 – 2 – 1 – 2 – 1 – 2 – 1 – 2 – Finish**



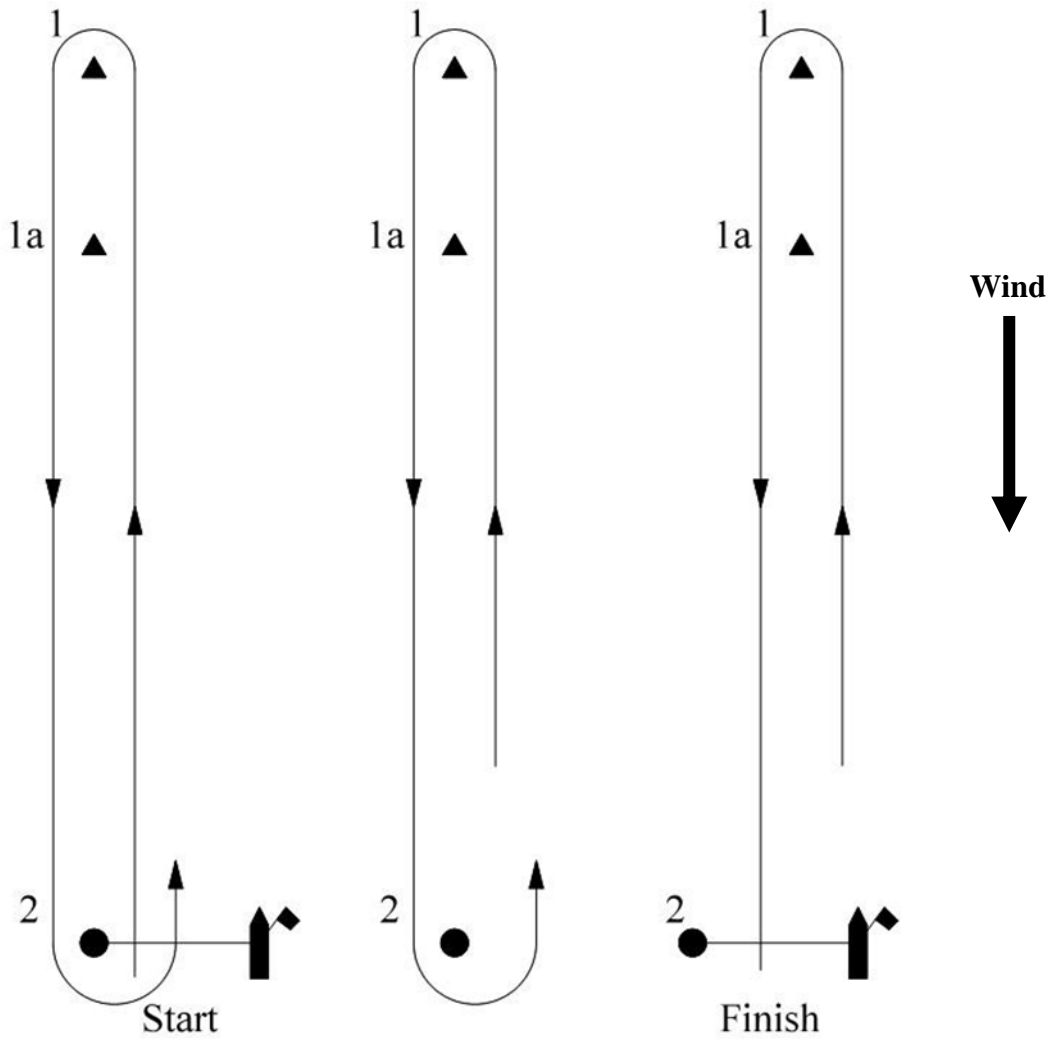
ATTACHMENT 5

Windward-Leeward

Back to Back Races

Flag D

- Division 1 Start – 1 – 2 – 1 – 2 – 1 – Finish
- Etchells Start – 1a – 2 – 1a – 2 - 1a – Finish
- Division 2 Start – 1 – 2 – 1 – Finish



Note:-  
Mark 1a may or may not be required.

**ATTACHMENT 6**

**Courses**

**Windward-Leeward-Triangle Courses**

- **Standard** (see attachment 1 diagram) : **Numeral Pennant 0**  
 The diagram in the attachment shows a course laid for the marks to be left to port. The course may be laid for the marks to be left to starboard, in which case mark 2 shall be placed to the starboard side of the first leg of the course instead of to port as shown in the diagram.  
 Course: Start - 1 - 2 - 3 - 1 - 3 – Finish.  
 The length of the windward leg will be approximately 2 miles—a total race distance of approximately 10.8 nautical miles.
  
- **Short Beat** (see attachment 1 diagram) : **Flag O**  
 Course: Start - 1 - 2 - 3 - 1 - 3 - 1 - 2 - 3 - 1 – 3 - Finish.  
 The windward leg will be approximately 1.1 miles—a total race distance of approximately 10.9 nautical miles.

**Windward-Leeward Courses**

- **(Type A)** (see attachment 2 diagram) : **Numeral Pennant 8**  
 Boats shall sail between the gate marks (2S & 2P) in the direction from the previous mark, and round either gate mark.  
 Course: Start - 1 - Gate - 1 - Gate - 1 - Finish.  
 The windward leg will be approximately 1.8 nautical miles - a total race distance of approximately 10.8 nautical miles.  
 (Gate may not be laid at the start.)
  
- **(Type B)** (see attachment 3 diagram) : **Numeral Pennant 9**  
 Boats shall sail between the gate marks (2S & 2P) in the direction from the previous mark, and round either gate mark.  
 Division 1 course: Start – 1 - Gate - 1 - Gate - 1 - Finish.  
 Etchells course: Start - 1a - Gate - 1a - Gate - 1a - Finish.  
 Division 2 course: Start - 1 – Gate - 1 - Finish.
  
- **Long Beat** (see attachment 4 diagram) : **Flag U**  
 Course: Start - 1 - 2 - 1 – 2 - Finish. The length of the windward leg will be approximately 2 miles - a total race distance of approximately 10.4 nautical miles
  
- **Short Beat** (see attachment 4 diagram) : **Flag K**  
 Course: Start - 1 - 2 - 1 - 2 - 1 - 2 - 1 – 2 - Finish. The windward leg will be approximately 1.1 miles - a total race distance of approximately 10.2 nautical miles.

- **Back to Back races** (see attachment 5 diagram) : **Flag D**  
Two weather marks shall be laid. Mark 1 will be the windward mark for Division 1 & Division 2.  
Mark 1a will be the windward mark for Etchells.  
Division 1 course: Start – 1 – 2 - 1 - 2 - 1 - Finish.  
Etchells course: Start - 1a – 2 - 1a - 2 - 1a - Finish.  
Division 2 course: Start – 1 – 2 - 1 - Finish.

**Pursuit Courses** - other than those designated in separately issued Sailing Instructions.

Two courses are indicated by the signal: **Numeral Pennant 6**

- Division 1 and Multihulls: - Starting Line, CB 2 to port, CB 1 to port, a laid mark approximately 100 metres East of No 5 Beacon Corio Channel to port, then to the finishing line located in the vicinity of the start. Distance approximately 7.5 nautical miles.
- Division 2: - Starting Line, No 12 Beacon Hopetoun Channel to port, a laid mark approximately 100 metres East of No 5 Beacon Corio Channel to port, then to the finishing line. Distance approximately 5.2 miles.

**Club Courses**

<b>Club Course: No. 1</b>	<b>Time Limit: 3.0 Hours</b> Div 1 & Div 2
<b>Distance: 12.4 Nm</b>	<b>Time Limit: 4.0 Hours</b> Corio Cruising Div.
<ul style="list-style-type: none"> <li>▪ Start</li> <li>▪ Westerly North Channel Pile (Red)</li> <li>▪ CB1</li> <li>▪ 5 Corio Channel</li> <li>▪ 1 City Channel</li> <li>▪ 9 Hopetoun Channel</li> <li>▪ 3 Corio Channel</li> <li>▪ 12 Hopetoun Channel</li> <li>▪ Finish</li> </ul>	<ul style="list-style-type: none"> <li>to Port</li> <li>to Port</li> <li>to Port</li> <li>to Port</li> <li>to Port</li> <li>to Port</li> <li>to Starboard</li> </ul>
<b>Club Course: No. 2</b>	<b>Time Limit: 3.5 Hours</b> Div 1 & Div 2
<b>Distance: 13.0 Nm</b>	<b>Time Limit: 4.5 Hours</b> Corio Cruising Div.
<ul style="list-style-type: none"> <li>▪ Start</li> <li>▪ CB2</li> <li>▪ CB1</li> <li>▪ 12 Hopetoun Channel</li> <li>▪ 5 Corio Channel</li> <li>▪ 9 Hopetoun Channel</li> <li>▪ 1 City Channel</li> <li>▪ 12 Hopetoun Channel</li> <li>▪ Finish</li> </ul>	<ul style="list-style-type: none"> <li>to Port</li> <li>to Port</li> <li>to Starboard</li> <li>to Starboard</li> <li>to Starboard</li> <li>to Starboard</li> <li>to Starboard</li> </ul>
<b>Club Course: No. 3</b>	<b>Time Limit: 3.5 Hours</b> Div 1 & Div 2
<b>Distance: 14.4 Nm</b>	<b>Time Limit: 4.5 Hours</b> Corio Cruising Div.
<ul style="list-style-type: none"> <li>▪ Start</li> <li>▪ CB1</li> <li>▪ Westerly North Channel Pile (Red)</li> <li>▪ 2 Corio Channel</li> <li>▪ 1 City Channel</li> <li>▪ CB2</li> <li>▪ CB1</li> <li>▪ Finish</li> </ul>	<ul style="list-style-type: none"> <li>to Starboard</li> <li>to Starboard</li> <li>to Port</li> <li>to Port</li> <li>to Port</li> <li>to Port</li> </ul>

<b>Club Course:</b> No. 4	<b>Time Limit:</b> 3 Hours Div 1 & Div 2
<b>Distance:</b> 12.2 Nm	<b>Time Limit:</b> 4 Hours Corio Cruising Div
<ul style="list-style-type: none"> <li>▪ Start</li> <li>▪ 12 Hopetoun Channel</li> <li>▪ CB2</li> <li>▪ CB1</li> <li>▪ 11 Hopetoun Channel</li> <li>▪ 5 Corio Channel</li> <li>▪ 9 Hopetoun Channel</li> <li>▪ 3 Corio Channel</li> <li>▪ Finish</li> </ul>	to Starboard to Port to Port to Starboard to Starboard to Starboard to Port
<b>Club Course:</b> No.5	<b>Time Limit:</b> 4.5 Hours Div 1 & Div 2
<b>Distance:</b> 18.7 Nm	<b>Time Limit:</b> 5.5 Hours Corio Cruising Div
<ul style="list-style-type: none"> <li>▪ Start</li> <li>▪ 10 Hopetoun Channel</li> <li>▪ 2 Hopetoun Channel</li> <li>▪ 1 Wilson Spit Channel</li> <li>▪ Outer Lead to Alcoa Channel</li> <li>▪ 1 Hopetoun Channel</li> <li>▪ 7 Hopetoun Channel</li> <li>▪ CB1</li> <li>▪ 9 Hopetoun Channel</li> <li>▪ Finish</li> </ul>	to Starboard to Starboard to Port to Port to Starboard to Starboard to Port to Starboard
<b>Club Course:</b> No.6	<b>Time Limit:</b> 3.0 Hours Div 1 & Div 2
<b>Distance:</b> 8.5 Nm	<b>Time Limit:</b> 3.5 Hours Corio Cruising Div
<ul style="list-style-type: none"> <li>▪ Start</li> <li>▪ CB2</li> <li>▪ CB1</li> <li>▪ 3 Corio Channel</li> <li>▪ 12 Hopetoun Channel</li> <li>▪ Finish</li> </ul>	To Port To Port To Port To Starboard

**ATTACHMENT 7**

**ADDITIONAL SAILING INSTRUCTIONS FOR TWILIGHT SERIES**

To be read in conjunction with the current RGYC Alpha Course Sailing Instructions.

**1 SPECIAL CONDITIONS**

**1.1** There will be three Divisions, (1, 2 and Multihull). Boats will be allocated to a division according to their start of season handicap and shall sail the course appropriate to their division as indicated on the separately issued Starting Order Sheet, published for each race. (See Clauses 6 and 7 below)

**1.2** Only sails normally used for sailing to windward shall be used.

**2 STARTING LINE**

The starting area will be in the vicinity of the RGYC Marina.

The starting line will be between the mast displaying an orange flag on the Race Committee Boat and the start mark. A yellow safety mark may be laid near the Race Committee Boat. Boats approaching the starting line to start shall leave this mark on the same hand as the Race Committee Boat.

**3 FINISHING LINE**

The finish line will be in the vicinity of the RGYC Marina.

The finish line will be between the mast displaying an Orange flag on the Race Committee Boat and the finish mark.

**4 PURSUIT COURSE**

There shall be two separate courses designated as follows:

**Course A (for Division 1 and Multihulls)**

Approximately 7.5 miles, signified by Numeral Pennant 6.

Course: Starting Line, CB 2 to port, CB 1 to port, a laid mark approximately 100 metres East of No 5 Beacon Corio Channel to port, then to the finishing line.

**Course B (for Division 2)**

Approximately 5.2 miles, signified by Numeral Pennant 6.

Course: Starting Line, No 12 Beacon Hopetoun Channel to port, a laid mark approximately 100 metres East of No 5 Beacon Corio Channel to port, then to the finishing line.

**5 SAFETY**

**Sign-On**

On departing the Marina, boats shall notify the Race Committee Boat (*Alpha One* on VHF Channel 73), the name of the boat, sail number and the number of people on board.

Failure to sign-on may result in a boat being scored DNF by the Race Committee without a hearing. This changes rules A4, A5 and 63.1.

There is **no requirement to sign-off** at the conclusion of racing and any such calls may not be acknowledged.

**6 START TIMES AND GROUPS**

Boats start in groups. The membership of each group is updated weekly. A revised list will be available from the box beside the results notice board located at the rear of the Club's main bar 2 hours before the first start.

**7 THE START. Rule 26 is changed as follows:-**

**7.1 WARNING SIGNAL.** Five minutes before the start time of the first group, the Course Flag shall be displayed with one sound.

**7.2 PREPARATORY SIGNAL.** One minute before the start signal of the first group the numeral zero will be displayed and Flag P displayed with one sound.

**7.3 START SIGNAL.** Replacing numeral 'zero' with numeral 'one' and one sound indicates the start of the first group. Flag P will remain displayed until the last start.

**7.4 SUBSEQUENT STARTS.** The next-start-group number displayed is incremented at the start of each group. A sound will be made with each start.

Any boat allocated to a group number lower than that displayed may start.

**8 INDIVIDUAL RECALLS**

Rules 29.1 and A5 are changed as follows:- Flag X shall remain displayed until the boat has returned completely to the pre-start side of the line or one minute after its start time, whichever is later. Any boat failing to comply will incur a penalty increasing the elapsed time for that boat by 8%. The newly computed elapsed time shall then be used to determine the corrected finishing position.

**9 TIME LIMIT**

The first boat must finish before 2000 hours. Boats finishing later than 2000 hours shall be scored Did Not Finish (DNF) without a hearing. This changes rules 35, A4 and A5

**ATTACHMENT 8**  
**ADDITIONAL SAILING INSTRUCTIONS FOR TUFF MARINE SERIES**

**1.0 RULES**

The International Regulations for Preventing Collision at Sea shall apply for this event after sunset.

**2.0 SIGN-ON**

On departing the Marina, boats shall notify the Race Committee Boat ( VHF Channel 71), the name of the boat, sail number and the number of people on board.

Failure to sign-on may result in a boat being scored DNF by the Race Committee without a hearing. This changes rules A4, A5 and 63.1.

There is **no requirement to sign-off** at the conclusion of racing and any such calls may not be acknowledged.

**3.0 COURSE**

**3.1** The course will be selected from the Club Courses in Attachment 6 and signalled as per clause 9.2.

**3.2** When a course is shortened, the Race Committee Boat may display an amber flashing light.

**4.0 THE START**

**4.1** The starting line will be between the Signal Box situated on the North-West corner of the Marina breakwater and the 'Yellow West cardinal mark' to the North-West of the Signal Box.  
**Refer Attachment 9**

**5.0 FINISHING LINE**

The finishing line will be between the Signal Box on the North-West corner of the Marina breakwater and the outer end of Cunningham Pier. Boats shall cross the finishing line in a generally Southerly direction, leaving the North Cardinal mark (near the north-west corner of the Marina) to port. The Race Committee Boat may be on station adjacent to the Signal Box.

**6.0 FINISHING**

When crossing the finishing line it shall be the responsibility of boats to illuminate their sail number so the Race Committee can identify the boat. (It may be necessary to alter the trim of the mainsail in order that the number may be seen). Boats are requested to notify the Race Committee by radio (VHF 71) on approaching the Finish Line. Each boat identified may be given a sound as she crosses the finishing line.

**7.0 TIME LIMIT**

The race time limit is 2330 hrs. Boats finishing after this time shall be scored Did Not Finish (DNF) without a hearing. This changes rules 35, A4 and A5  
**Time limits specified in Club Course descriptions Attachment 6 do not apply.**

**8.0 PROTESTS**

The protest time limit is 1200 hours on the day following the event.

**9.0 ABANDONMENT**

The race will not be started if the average wind velocity is in excess of 25 knots for a period deemed by the Race Committee.

If the race is abandoned the Race Committee will endeavour to contact boats by radio on VHF channel 71.

**10.0 RADIO COMMUNICATION**

**10.1** Radio communications will be via VHF channel 71 Refer SI clause 20.1(a)

**10.2** It is recommended that all vessels maintain a listening watch on VHF channel 71.

**10.3** **When a boat is in the vicinity of the last rounding mark of the course it shall advise the Race Committee by radio (VHF 71).**

